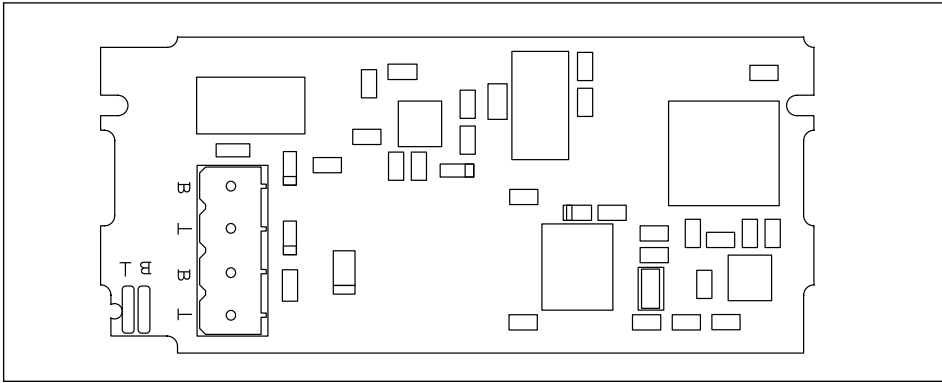


genuine original accessories

1



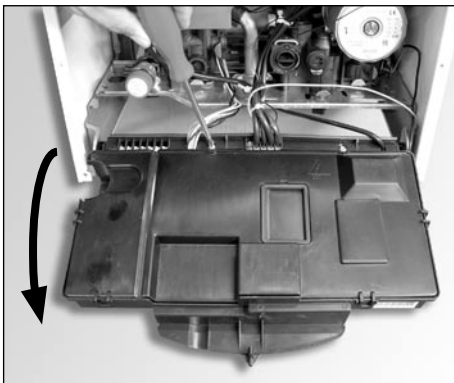
ISTRUZIONE INSTALLAZIONE
INTERFACCIA BUS

INSTRUCTION INSTALLATION
INTERFACE BUS

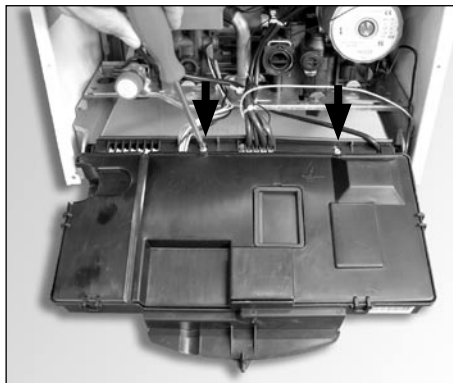
BUS D'INTERFACE INSTALLATION
D'INSTRUCTION

BÚS DE INTERFAZ DE INSTALACIÓN
DE INSTRUCCIÓN

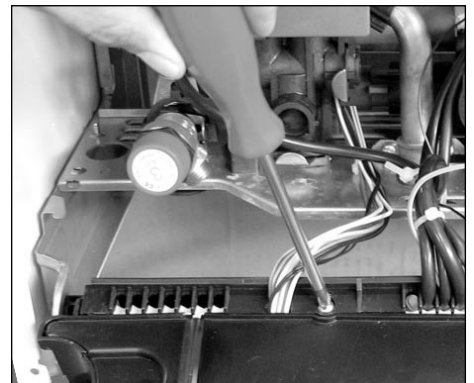
2



3



4



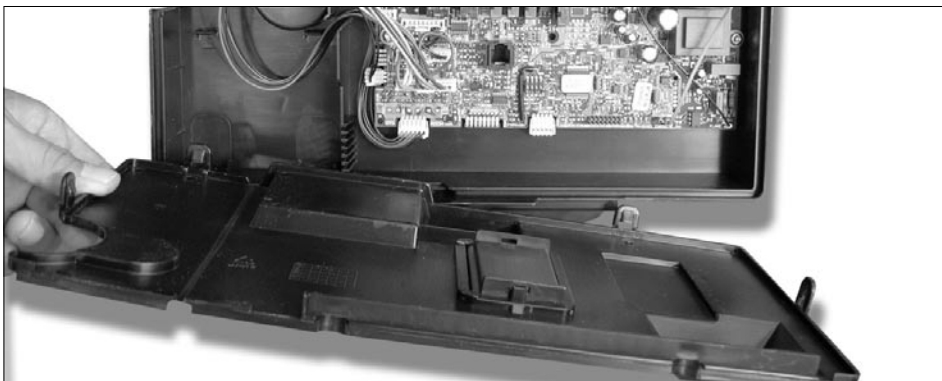
5



6

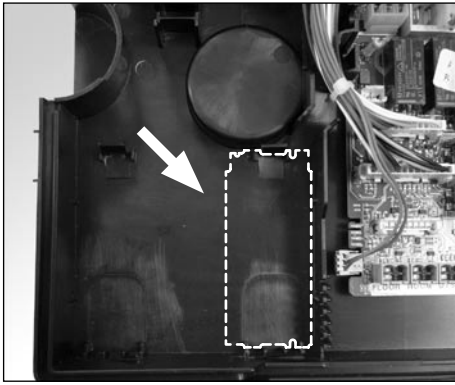


7

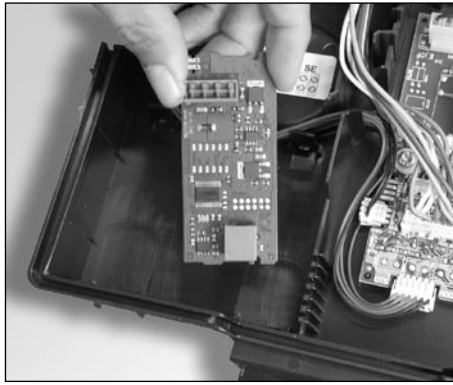


genuine original accessories

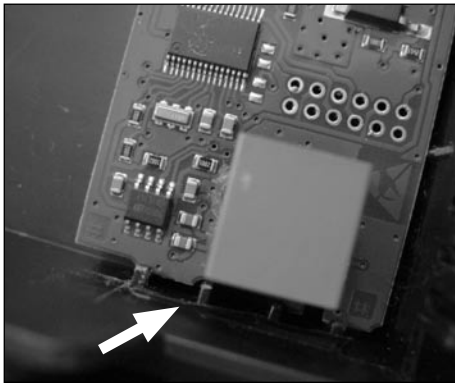
8



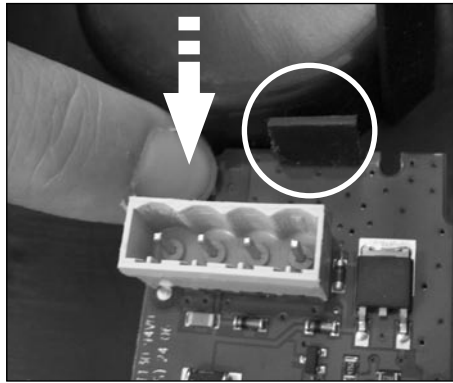
9



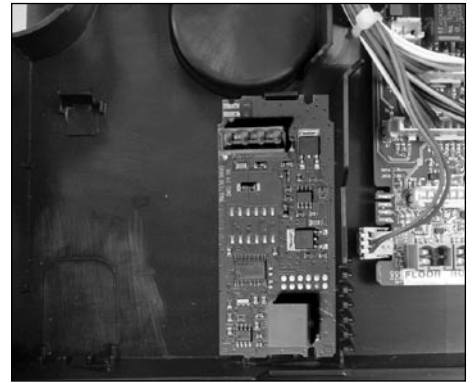
10



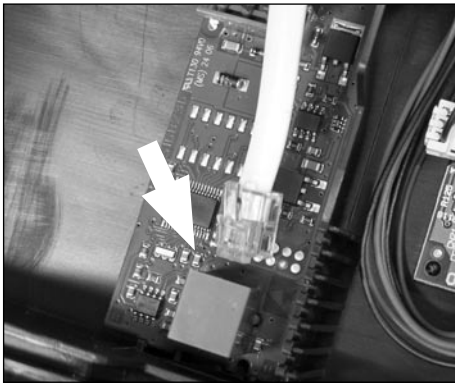
11



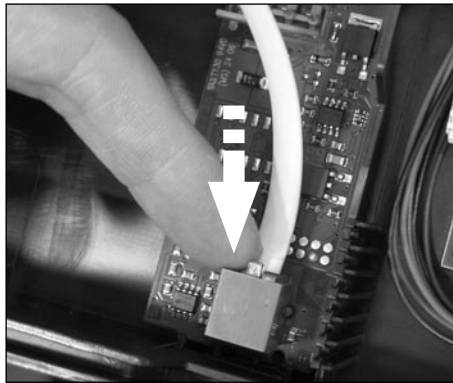
12



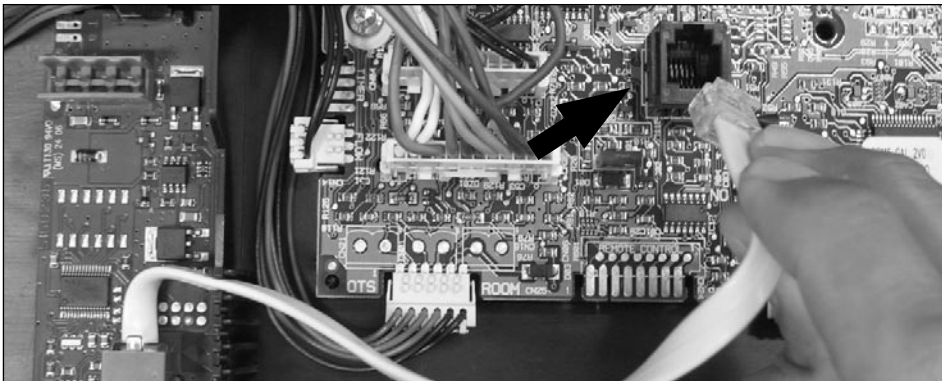
13



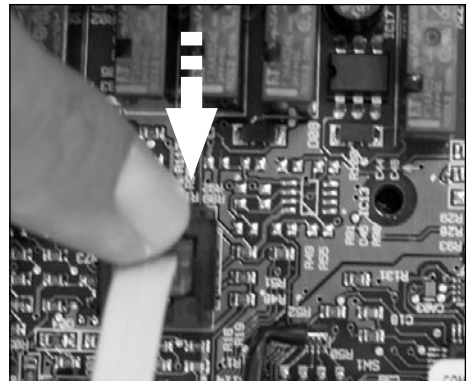
14



15

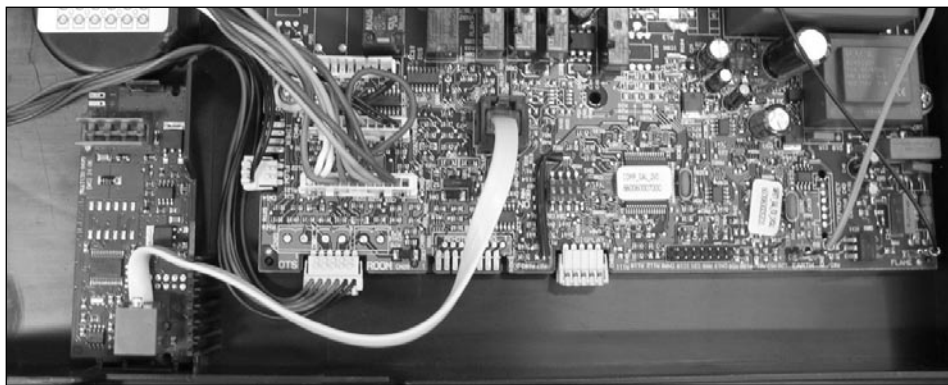


16

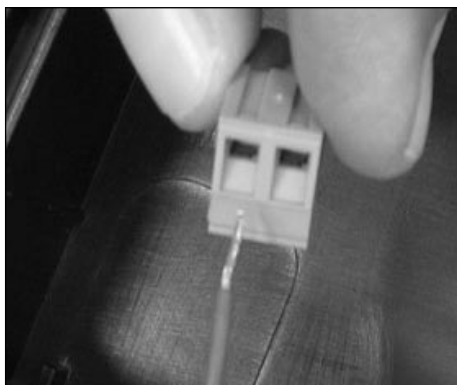


genuine original accessories

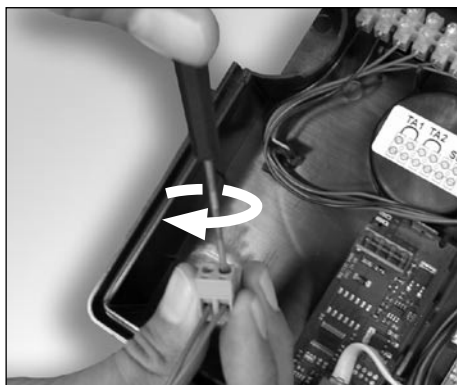
17



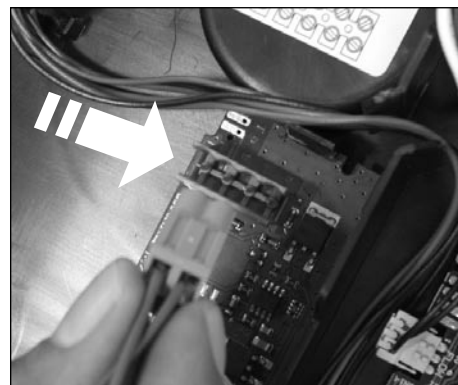
18



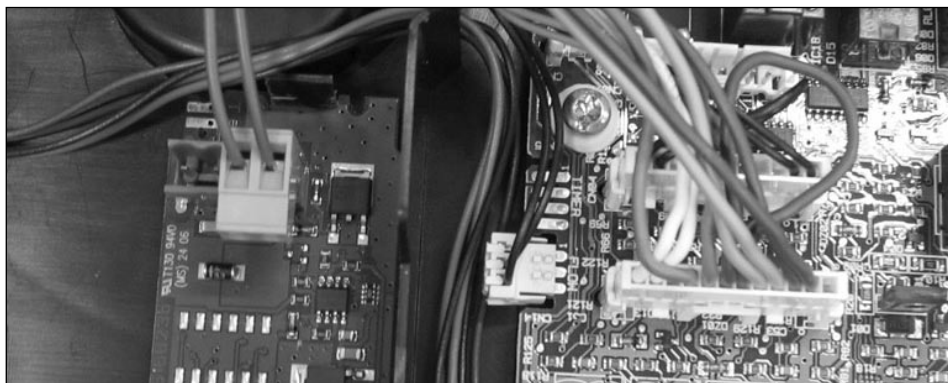
19



20



21



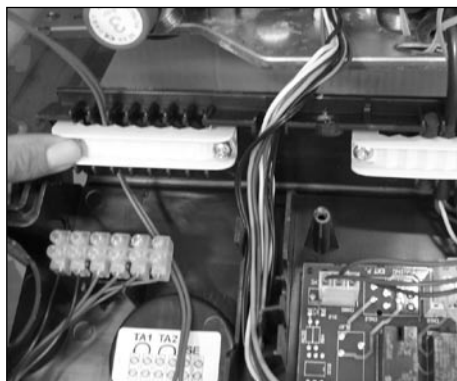
Linea collegamento periferiche:
 Line connection peripheral:
 Ligne liaison périphériques:
 Periférico de conexión de línea:

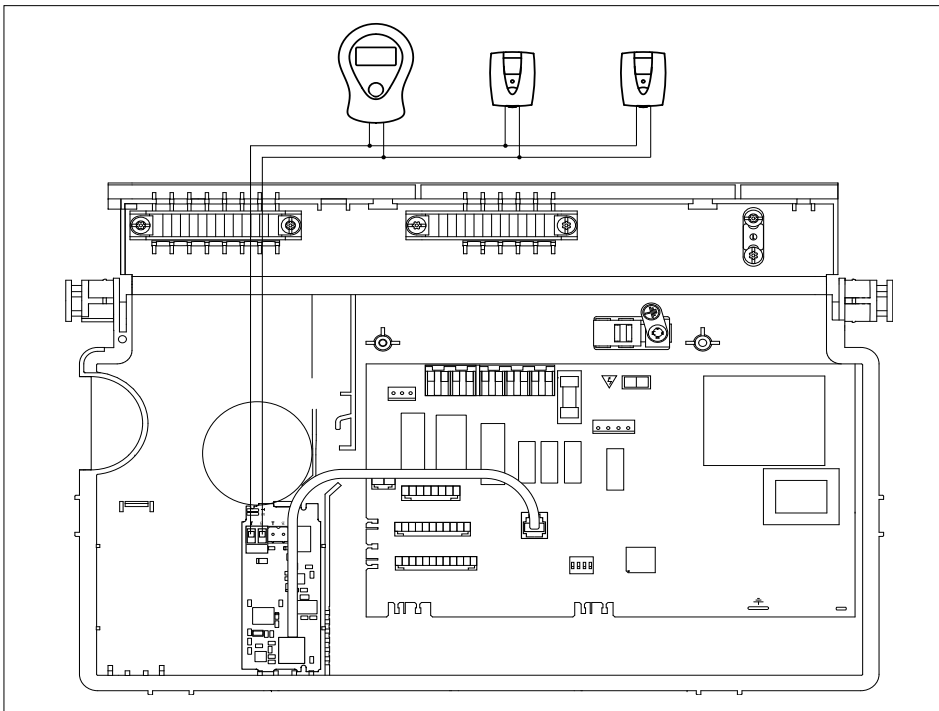
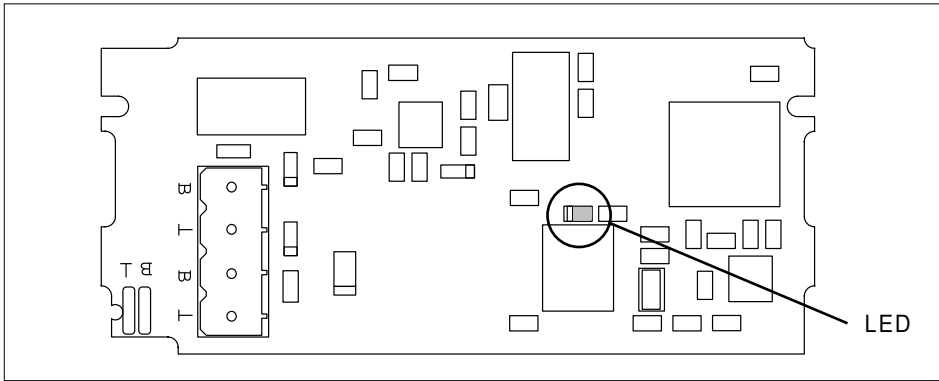
- ø min 0,50 mm²
- L max 50 mt

22



23





LED:
 spento = problema comunicazione con scheda madre
 acceso = problema comunicazione con periferiche
 lampeggiante = funzionamento OK

LED:
 out = problem communication with PCB
 turned on = problem communication with peripheral
 flashing = operation OK

LED:
 éteint = problème communication avec des PCB
 allumé = problème communication avec des périphériques
 clignotant = fonctionnement OK

LED:
 Apagado = Problema comunicación con PCB
 Encendido = Problema comunicación con periféricos
 Luz intermitente = Funcionamiento OK



ATTENZIONE

dispositivo sensibile all'elettrostaticità maneggiare con cura

ATTENTION

observe precautions for handling Electrostatic sensitive devices

ATTENTION

observez les précautions pour manipuler les dispositifs sensibles électrostatiques

ATTENTION

observe las precauciones para manejar los dispositivos sensibles electrostáticos

DATI TECNICI / TECHNICAL DATA / DONNÉES TECHNIQUES / DATOS TÉCNICOS	
alimentazione elettrica / power supply alimentation d'énergie / fuente de energía	24VDC and 5VDC
assorbimento elettrico / power consumption absorption électrique / consumo de energía	max. < 2W
temperatura ambiente di utilizzo / operating temperature température ambient de j'utilise / temperatura ambient de yo utiliza	0 + 70°C
Temperatura di stoccaggio/ Storage temperature/ Plage de température de stockage/ Temperatura de almacenamiento	-20 + 70°C
alimentazione Bus / Bus supply Bus alimentation / alimentación Bus	70mA
lunghezza e sezione cavo Bus / Bus cable – length, cross section longueur et sezione creux Bus / longitud y sez hueco Bús	max. 50m, min. 0.5mm ²
classe di isolamento / Insulation class classe d'isolement / clase d'isolement	III (EN 60730)
grado di protezione / degree of protection degré de protection / grado de protección	IP00 (EN 60529)
Conformità/ Comformity	CE LVD 2006/95/EEC
Interferenze elettromagnetiche/ Electromagnetic interferences/ Interference electromagnetic/ Electromagnético interferences	EN 60730-1
Emissioni elettromagnetiche/ Electromagnetic emission Emission electromagnetic/ Electromagnético emisión	EN 60730-1
Conformità standard/ Standard compliance Standard de conformité/ Estandard de conformidad	EN 60730-1